

## *SN-Series Modular External Grinders*

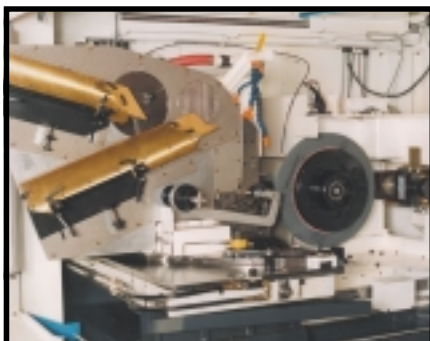
The SN-Series Modular External Grinders offer a highly productive, programmable grinding system capable of producing higher quality products in the automotive and bearing industries along with other industrial applications. This modern external single or multi-surface grinder combines traditional machine tool integrity with the latest technology, making it well suited for evolving manufacturing processes.

The SN-Series External Grinders have been engineered to help you optimize your grinding operations and to excel in a wide range of applications. With OD capacities up to 30", many operations including Shoulder and Profile grinding can be performed. A highly stable, torsion resistant machine platform is coupled with SNI's proprietary hydrostatic slide system, rigid dressing system, variable speed controls and full enclosure guarding, making these machines capable of achieving up to 12,000 sfpm.

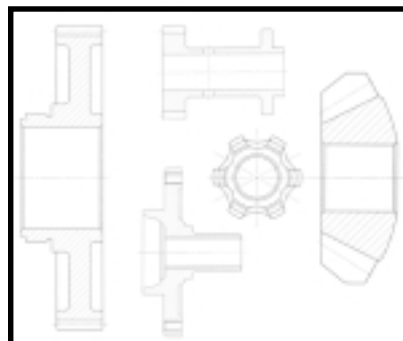


State-of-the-art CNC or PLC control technology is mated with custom SNI grinding software that covers most grinding applications. The user interface is simple to understand, adding to the ease of programming, set-up and process/cycle optimization.

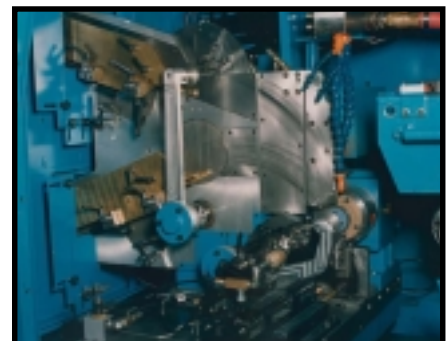
*SNI understands the grinding process, the challenges it presents and the requirements needed to exceed our customer's goals.*



SHOE CENTERLESS  
SINGLE ARM LOADER



CHUCKERS  
MANUAL OR AUTO LOAD



SHOE CENTERLESS  
DOUBLE ARM LOADER

**CAPACITIES:**

	<b>SN200-E</b>	<b>SN400-E</b>	<b>SN800-E</b>
Maximum OD	7.5" (190mm)	16" (406mm)	30" (762mm)
Wheel Diameter	20" (508mm)	20" (508mm)	24" (610mm)
X axis travel	14" (356mm)	14" (356mm)	14" (356mm)
Z axis travel (Optional)	6" (152mm)	6" (152mm)	6" (152mm)
Wheelhead drive (Std)	20HP (14.9 kW)	29HP (38.9kW)	29HP (38.9kw)
Workhead swivel	0-45 deg. or 45-90 deg.	0-45 deg. or 45-90 deg.	0-45 deg.

**SPEED AND FEEDS:**

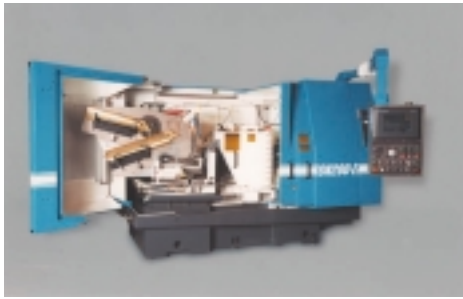
Rapid axis movement	600 in/min (15 m/min)	600 in/min (15 m/min)	600 in/min (15 m/min)
Feed Rates	Programmable	Programmable	Programmable
Workhead speed	30-2000 RPM	30-1000 RPM	30-500 RPM

**ACCURACIES:**

Axis resolution (with scales)	0.000004" (0.1micron)	0.000004" (0.1micron)	0.000004" (0.1micron)
-------------------------------	-----------------------	-----------------------	-----------------------

**GENERAL:**

Floor space (Std)	xxxxx	xxxxx	xxxxx
Machines height (Std)	xxxxx	xxxxx	xxxxx
Weight (Estimated)	xxxxx	xxxxx	xxxxx



*NOTE: Specifications are subject to change without notice. Specifications may reflect maximum optional capacity using extra-cost equipment. Specific machine options and/or workpiece applications may limit stated capacities.*

**SNI offers years of experience as designers and manufacturers of modern, productive and precise Internal, External and Rotary Surface Grinding Machines**

**MANUFACTURING FACILITIES**

Our facility is located in Worcester, Massachusetts, allowing us to take advantage of the region's vast grinding machine history. Engineering, purchasing, production, and quality control groups combine to assure state-of-the-art technology, quality workmanship, and reliable performance.

**APPLICATION CAPABILITIES**

A team of experienced Application Engineers brings the knowledge gained in a wide variety of successful installations to bear on your particular needs and constraints. Technically skilled and creative, our custom engineering capabilities distinguish SNI from any other company in the field.

**PARTS AND SERVICE**

SNI supports its industry-leading product knowledge by maintaining a comprehensive parts inventory to minimize downtime. Installations, field service, operator training, and maintenance recommendations are handled professionally by our technically skilled Service Engineers.



243 Stafford Street, Building 3  
Worcester, MA 01603  
www.sni-grinders.com